



WHOLESALE PRODUCT LIST

2024



HAWKE'S BAY NATURAL, EXPORT LAMB (HALAL) - Exclusive to Carve Meat Co.

Simply the best! Raised on lush green pastures of the Hawke's Bay to strict standards. Super tender, superb quality and consistency every time.

CODE	PRODUCT	PACK
HB05	Lamb Loin Cap On	4 per VP
HB10	Lamb Rump (cap off)	6 per VP
HB11	Lamb Rump (cap on)	4 per VP
HB02	Lamb Rack 75mm	8 Rib Long Bone-VP
HB04	Lamb Loins (back straps)	4 per VP
HB17	Lamb Neck Fillet	6 per VP
HB06	Tunnel Boned Lamb Leg	1 per VP
HB12	Lamb Shoulder Boned/rolled /netted (Pre-order only)	1 per VP
HB122	Lamb Shoulder, Flat Packed	1 per VP
HB200	Lamb Oyster Cut Shoulder (bone in)	1 per VP
HB09	Lamb Hind-shanks (Pre-order only)	2 per VP 400gm+
HB08	Lamb Fore-shanks	3 per VP 300gm+
HB19	Lamb Short Ribs	4 per VP



Lumina Lamb offers a delicate taste and tender texture. Its consistency and quality allow for total reliability and ease of preparation, and breathtaking, innovative dish creation.

CODE	PRODUCT	PACK
TM022	Lumina Lamb Frenched Rack 75mm Cap On	1 per pkt (7 bone)
TM04	Lumina Lamb Loin	4 per pkt
TM11	Lumina Lamb Rump Cap On	
TM20	Lumina Lamb Square Cut Shoulder	1 per pkt (2.19kg approx)
TM200	Lumina Lamb Oyster Cut Shoulder	1 per pkt (1.1kg approx)
TM202	Lumina Scrag Shoulder	Shank On (1.6kg approx)



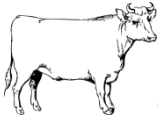
CARVE AGED PRIME BEEF (HEREFORD/ANGUS)

Prime Beef, grass fed, cold boned and aged for tenderness.

CODE	PRODUCT	PACK
BE02	Eye Fillet S/Muscle Off	1.8kg+ VP
BE05	Scotch Fillet/Ribeye	3-4kg VP
BE06	Sirloin	3-5kg VP
BE30	Beef Skirt Steak (Hanger Steak)	800gm -1kg VP
BE51	Point End Brisket	4kg+ VP
BE08	Short Rib	1 set Per VP
BE21	Beef Bavette	1.5kg VP
BE53	Beef Chuck	4-5kg VP
BE22	Beef Cheeks	1-2kg VP
BE11	Beef Stock Bones	20kg carton
BE12	Beef Marrow Bones (Whole)	Whole
BE122	Beef Marrow Bones (Cut)	Cut to required size
BE300	Carve Beef Flank Steak	
PS09	Pure South OP Rib Whole	

We do have other beef cuts available to us, however for some of these items we require a minimum order of 20kg. Please contact us if you need more information.

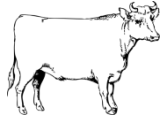
CODE	PORTIONED CUT BEEF	PACK
BE044	Eye Fillet Portion Cut	VP
BE055	Scotch Portion Cut	VP
BE066	Sirloin Portion Cut	VP



GRASS FED WAGYU BEEF

CODE	PRODUCT	PACK
BEW51	Wagyu Point End Brisket	4-5kg
BEW05	Wagyu Scotch Fillet (MBS 2-3)	
BEW57	Wagyu Deckle	

** Subject to availability, please enquire.*



HANDPICKED - Premium Beef which has been aged for 45 days. Bone in items are aged 21 days. Sourced from high country stations in Central Otago and Southland, these animals roam free to graze on pasture all year-round.

The beef is carefully selected with naturally high marbling providing confidence in the consistency, quality and taste of this excellent product. **Product may be subject to availability, please enquire.**

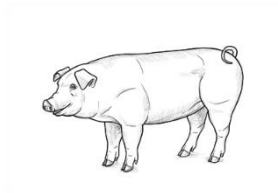
CODE	HANDPICKED	WEIGHT RANGE PER PACK
HP02	Hand Picked Eye Fillet S/M Off	1.8-2.4 kg
HP05	Hand Picked Beef Scotch	5kg +
HP06	Hand Picked Sirloin	5kg +
HP08	Hand Picked Beef Shortrib	2-2.5 kg
HP088	Hand Picked Beef Shortrib Cut (request spec)	1-1.5 kg
HP09	Hand Picked Beef OP Rib (WHOLE)	6-7 kg
HP1001	Handpicked Chuck Tender	4kg - 3 per pack
HP21	Handpicked Bavette	5-6 kg
HP290	Handpicked Rump Cap	5-6 kg
HP400	Handpicked Inside Skirt	2-3 kg
HP51	Hand Picked Point End Brisket	4 kg +

CODE	HAND PICKED PORTIONED CUT BEEF	PACK
HP055	Hand Picked Beef Scotch Portioned	Please request weight
HP066	Hand Picked Sirloin Portioned	Please request weight
HP099	Hand Picked OP Rib Portioned. Minimum sold as one full set.	Please note portioning is not to a specific weight.



New Zealand grown Wagyu Beef, farmed using traditional methods in Canterbury. Please enquire on pricing and availability of higher marble score product. Frozen at source. **Product subject to availability.**

CODE	PRODUCT - MARBLE SCORE 6-7	WEIGHT RANGE PER PACK
WW02	Black Origin Beef Tenderloin BMS 6-7	Approx: 2.62 kgs
WW05	Black Origin Beef Ribeye MBS 6-7 (Scotch)	Approx: 5-6 kgs
WW06	Black Origin Beef Sirloin MBS 6-7	Approx: 7-9 kgs
WW21	Black Origin Bavette / Kainomi MBS 4-7	
WW1222	Black Origin Wagyu Bone Marrow Canoe Cut	
WW803	Black Origin Tongue	Approx: 1kg
WW703	Waitaha Wagyu Ox Tail Whole	

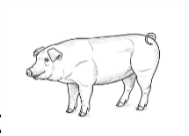


FREEDOM FARMS PORK

The leaders in free farmed production, Freedom Farms were the first to bring us this fantastic, ethically raised pork. No cages, so great quality product made from happy pigs.

CODE	PRODUCT	WEIGHT RANGE PER PACK
FF100	Belly Skin On/Bone Out	2.5-4.5kg VP
FFSO100	Belly Skin Off/Bone Out	2-4kg VP
FFBO10	Belly Skin On Bone In	3-6kg VP
FF106	Pork Belly BRN skin on	
FF01	Pork Fillets	2.5kg gas flushed
FF21	Loin (Skin off)	5kg gas flushed, 2.5kg VP
FFBB111	Boston Butt – skin on bone in	4-5kg VP
FFSO111	Pork Shoulder – Bone Out / Skin Off	4-5kg VP
FFS111	Pork Shoulder - Bone Out / Skin On	4-5kg VP
PT18	Pickled Pork Shoulder (Pre-order only)	3-4kg VP
FF13	Raw Hocks	Approx .750gm each
FF05	Pork Scotch/ Neck	1.3-1.5kg VP
FF22	Pork Cheeks Skin Off	1-2kg VP
FF017	Pork Backfat (2kg VP)	2kg VP
FF018	Pork Skin (2kg VP)	2kg VP

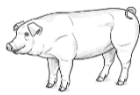
****All of the above products are free farmed, NO exception.***



KUROBUTA PORK

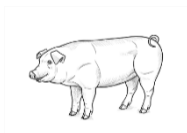
Kurobuta Pork is well known as being the Wagyu of pork. It comes from Berkshire pigs farmed in the traditional Japanese methodology. This pork is farmed and grain-finished in South Canterbury. Supply limited.

CODE	PRODUCT: WHITEHART PORK	PACK
KWP03	Kurobuta NZ Pork Rack	
KWP05	Kurobuta NZ Pork Scotch	



PORK (NON FREE-RANGE)

CODE	PRODUCT	PACK
POH100	Spanish Pork Belly Skin On	1.3kg
POH05	Spanish Pork Scotch	2kg
POH111	Spanish Pork Shoulder Skin Off Bone Out	1.5kg
POF12	St Louis Pork Ribs Frozen (USA)	17-20kg ctn



BACON & HAM NEW ZEALAND FREE FARMED

All Mahy Farms small goods are produced using free-farmed or free-range New Zealand pork.

CODE	BACON - FREE FARMED	PACK
BAPT14	Mahy Farms Free Farmed Streaky Bacon	1kg VP
BAPT145	Mahy Farms FF NZ Streaky Bacon 5mm	1kg VP
BAPT16	Mahy Farms Free Farmed Shoulder Bacon	1kg VP

CODE	HAMS - FREE FARMED	PACK
PT15	Mahy Farms Champagne Ham Whole	6-8kg
PT166	Mahy Farms Boneless Half Ham	2-2.5kg
PT1777	Mahy Farms Free Farmed Sliced Ham 1kg	1kg pkt

BACON – MADE FROM SPANISH PORK

CODE	NON FREE FARMED BACON	PACK
BAZ14	European Streaky Bacon - SLICED	1kg VP
BAZ144	European Streaky Bacon - SLAB (WHOLE)	1-1.5kg per piece
BAZ145	European Streaky Bacon 5mm thick	1kg VP

**This product is made with imported Spanish Pork and is not free range.*



MAHY FARMS SMALL GOODS

These award winning small goods are produced by hand in small volumes, not mass produced. We use real free range meat, herbs and spices. If you need the list of ingredients, please ask us. **Sausages that are P.O.A require pre-ordering.** Please speak to your Sales Representative.



SAUSAGES

CODE	SMALLGOODS	PACK
PT01	Black Pudding	300gm VP
PT09	Mahy Farms Chorizo Horseshoe	300gm VP
PT0999	Mahy Farms Chorizo Sausage	1kg VP (80gm each)
PTF16	Frankfurters	1kg VP
PT17	Pork Fennel Sage Sausage	1kg VP (80gm each)
PT12	Lamb, Mint and Honey 50g Sausage (Pre-order only)	10kg VP (50gm each)
PT19	Beef Sausage 50gm (Pre-order only)	10kg VP (50gm each)
PT21	Fat Italian Sausage 50g (Pre-order only)	10kg VP (50gm each)
PT299	Venison and Plum Sausages 50g (Pre-order only)	10kg VP (50gm each)

CODE	HAM HOCKS - FREE FARMED	PACK
PT144	Mahy Farms Large Smoked Hock	2-2.5kg

All pork based small goods are produced using free farmed meat.



BURGER PATTIES

CODE	PRODUCT	PACK
MPB01	Carve Beef Burger Patties 150gm	Min. 32# per box (frozen)
MPB02	Beef Burger Patties - Kids 100gm	Min. 32# per box (frozen)
MPBD200	Dry Aged Beef Pattie 200gm	Min. 32# per box (frozen)
WBP180	Wagyu Burger Pattie 180g	Min. 32# per box (frozen)

MINCE & DICED PRODUCT

CODE	PRODUCT	PACK
BE550	Wagyu Mince	1kg VP
BE244	Wagyu Diced	1kg VP
BE50	Prime Beef Mince	2kg VP
BE533	Beef Chuck Diced	2kg VP
BESF50	Smoked Fat Beef Mince	2kg VP
BEDF50	Mince, Dry Aged Beef Mince 25% fat	2kg VP
LA50	Lamb Mince (Prime Lamb Mince)	1kg VP
LA24	Lamb Diced (Leg)	1kg VP
FF50	Pork Mince (Freedom Farms)	2kg VP free range
VE50	Veal Mince (Pure)	2kg VP
PT171	Pork and Fennel Mince (Frozen)	2kg VP
PT51	Mince, Mahy Farms Chorizo Mince	1kg VP

OFFALS & OTHER BITS

CODE	PRODUCT	PACK
BE22	Beef Cheeks	2-3kg VP
BE26	Beef Tongue (raw)	800-900gms
VE11	Veal Bones	20kg carton



DUNCAN NEW ZEALAND VENISON Exclusive to Carve Meat Co.

This is a superb product from farmed New Zealand venison, grown in the Central Otago area and the Central Plateau of the North Island, producing fantastic tender product each time.

CODE	PRODUCT: VENISON	PACK
DC15	Pamu Bistro Fillet	1-2kg pack
DC08	Duncan Venison Short Shanks (Talk to your Sales Rep)	2 per pack
DC04	Duncan Venison Shortloin (Talk to your Sales Rep)	2 per pack



FREE-RANGE CHICKEN – HALAL

Great chicken raised the true free range way. Animals that have access to pasture and clean water... no cages! **Product may be frozen.*

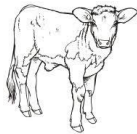
CODE	PRODUCT	PACK
WC022	Free Range Chicken - Whole	1.4 kg
WC05	Free Range Chicken Breasts Skin on	4 per pack – 1kg VP
WC06	Mahy Farms FR Chicken Leg bone in	3 per pack - 1kg VP
WC09	Mahy Farms FR Chicken Wings	1kg VP
WC10	Free Range Chicken Livers	1kg VP
WC13	Free Range Chicken Thighs-boneless (skin off)	10-12 per VP – 1kg
WC16	Free Range Chicken Thighs boneless(skin on)	10-12 per VP – 1kg
WC018	Free Range Chicken Skin	
WC24	Free Range Chicken Diced (On request)	
WC50	Free Range Chicken Mince (On request)	



DUCK

This duck is barn raised in humane conditions. Great quality product.

CODE	PRODUCT	PACK
GL02	Duck Breast	2 per pack - VP
QD05	Duck Livers	
QD11	Duck Legs	2 per pack - VP



VEAL

	VEAL PRODUCT (Bobby Veal)	PACK
VE04	Veal Loin - Frozen (Can be used for Schnitzel)	1kg pack
VE27	Veal Primals, Rump, Knuckle	.500gm - 1.5kg
VE277	Veal Topside & Knuckle Cut Lengthwise	

Some Veal product is subject to availability. Veal is a frozen product. Please contact us if you are interested in a particular cut/product.



PLEASE NOTE:

- All prices are exclusive of GST / All prices are subject to fluctuation/change.
- With all items we will try to inform you of cost increases and the reason where possible.
- Payment terms are strictly 7 days from the invoice date.
- Allow 24 hours for delivery within the Auckland Area.
- For same day deliveries within the Auckland City area, orders are to be placed by 6am.
- Chilled overnight freight to most destinations in the North Island. Chilled freight to the South Island allow 2-4 days.
- Any product returns need to be notified within 36 hours. Products outside these time frames will not be accepted.
- **Minimum order of \$300 + GST.** Orders under this amount may incur a handling fee and freight charge.
- Terms and Conditions apply.

Our product range is continually changing. If you have any special requirements or queries, please get in touch.

Office

0800 493 253 or (09) 441 7166

E info@carvemeatco.co.nz

Orders

Email: orders@carvemeatco.co.nz or phone the office number

Andrew Mackle

Sales Manager

M 027 235 0709

E andrew@carvemeatco.co.nz

Ivy Norbury

Sales Representative

M 020 477 7401

E ivy@carvemeatco.co.nz