



## WHOLESALE PRODUCT LIST

JULY 2020



### **HAWKE'S BAY NATURAL, EXPORT LAMB (HALAL) - Exclusive to Carve Meat Co.**

Simply the best! Raised on lush green pastures of the Hawkes Bay to strict standards. Super tender, superb quality and consistency every time.

CODE	PRODUCT	PACK
HB10	Lamb Rump (cap off)	6 per VP
HB11	Lamb Rump (cap on)	4 per VP
HB16	Lamb 4 Rib Rack	4 rib 2 per VP
HB03	Lamb Rack 30mm	8 Rib Short Bone-VP
HB02	Lamb Rack 75mm	8 Rib Long Bone-VP
HB04	Lamb Loins (back straps)	4 per VP
HB17	Lamb Neck Fillet	6 per VP
HB06	Tunnel Boned Lamb Leg	1 per VP
HB12	Lamb Shoulder Boned/rolled /netted	1 per VP
HB122	Lamb Shoulder, Flat Packed	1 per VP
HB200	Oyster (Banjo) Cut Shoulder, bone in	1 per VP
HB09	Lamb Hind-shanks	2 per VP 400gm+
HB08	Lamb Fore-shanks	3 per VP 300gm+
HB19	Lamb Short Ribs	4 per VP



### CARVE AGED PRIME STEER BEEF (HEREFORD/ANGUS)

Prime Steer, grass fed, cold boned and aged for tenderness.

CODE	PRODUCT	PACK
BE02	Eye Fillet S/Muscle Off	1.8kg+ VP
BE05	Scotch Fillet/Ribeye	3-4kg VP
BE06	Sirloin	3-5kg VP
BE07	Rump	4kg+ VP
BEF09	Op Rib (6-7 Rib Whole)	4-6kg VP
BE30	Beef Skirt Steak	800gm -1kg VP
BE51	Point End Brisket	4kg+ VP
BE08	Short Rib	1 set Per VP
BE21	Beef Bavette	1.5kg VP
BE53	Beef Chuck	4-5kg VP
BE22	Beef Cheeks	1-2kg VP
BE23	Beef Ox Tail	1kg VP
BE11	Beef Stock Bones	20kg carton
BE12	Beef Marrow Bones (Whole)	Whole
BE122	Beef Marrow Bones Cut	Cut to required size
BE27	Corned Beef	1.5-3kg VP

*We do have other beef cuts available to us, however for some of these items we require a minimum order of 20kg. Please contact us if you need more information.*

CODE	PORTIONED CUT BEEF	PACK
BE044	Eye Fillet Portion Cut	VP
BE055	Scotch Portion Cut	VP
BE066	Sirloin Portion Cut	VP
BE077	Rump Portion Cut	VP

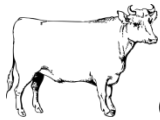


### CARVE DRY AGED BEEF

We have a room purpose built for the dry ageing of meat, in particular beef. We dry age products between 7 to 28 days, giving the meat a rich color and providing a super tender eating experience. Please call to enquire.

CODE	PRODUCT	PACK
DB02	Dry Aged Beef Fillet	Whole
DB05	Dry Aged Scotch Fillet	Whole
DB06	Dry Aged Sirloin	Whole
DB07	Dry Aged Beef Rump	Whole

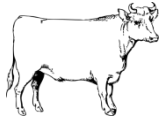
*Note: We sell these meat cuts on the 'wet weight', not the finished weight.*



### CARVE WAGYU BEEF

CODE	PRODUCT	PACK
BEW077	Wagyu Heart of Rump (no cap)	2kg+ VP
BEW51	Wagyu Point End Brisket	4-5kg
BEW57	Wagyu Deckle	1kg

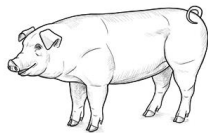
*\* Subject to availability, please enquire.*



CODE	HANDPICKED	PACK
HP02	Hand Picked Eye Fillet	
HP05	Hand Picked Beef Scotch	
HP06	Hand Picked Sirloin	
HP07	Hand Picked Rump (whole)	
HP08	Hand Picked Beef Shortrib	
HP088	Hand Picked Beef Shortrib Cut in Half	
HP09	Hand Picked Beef OP Rib	

CODE	PORTIONED CUT BEEF	PACK
HP022	Hand Picked Eye Fillet Portioned	
HP055	Hand Picked Beef Scotch Portioned	
HP066	Hand Picked Sirloin Portioned	
HP077	Hand Picked Rump Portioned	

***\*Product subject to availability.***

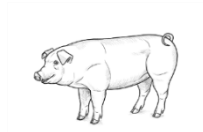


### FREEDOM FARMS PORK

The leaders in free farmed production, Freedom Farms were the first to bring us this fantastic, ethically raised pork. No cages, so great quality product made from happy pigs.

CODE	PRODUCT	PACK
FF100	Belly Skin On/Bone Out	2.5-4.5kg VP
FFSO100	Belly Skin Off/Bone Out	2-4kg VP
FFBO10	Belly Skin On Bone In	3-6kg VP
FF01	Pork Fillets	2.5kg gas flushed
FF21	Loin (Skin off)	5kg gas flushed, 2.5kg VP
FFBB111	Boston Butt – skin on bone in	4-5kg VP
FFSO111	Pork Shoulder – Bone Out / Skin Off	4-5kg VP
FFS111	Pork Shoulder - Bone Out / Skin On	4-5kg VP
PT18	Pickled Pork Shoulder	3-4kg VP
FF13	Raw Hocks	750gm each
FF05	Pork Scotch/ Neck	1.3-1.5kg VP
FF22	Pork Cheeks Skin Off	1-2kg VP
FF017	Pork Backfat (2kg VP)	2kg VP
FF018	Pork Skin (2kg VP)	2kg VP

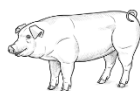
***\*All of the above products are free farmed, NO exception.***



**KUROBUTA PORK**

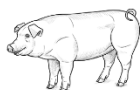
Snake River Farms Kurobuta pork is considered to be equal in status to “Kobe Beef”. We use only 100% purebred Berkshire Hogs as mandated by the Japanese Ministry of Agriculture.

CODE	PRODUCT: PORK: SNAKE RIVER	PACK
KP05	Kurobuta Pork Scotch (Collar Butt)	2kg VP
KP21	Kurobuta Pork Loin	1 - 1.5kg VP
KP12	Kurobuta Short Rib	1kg VP (2 x .500gm)



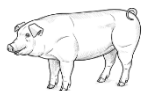
**SPANISH PORK**

CODE	PRODUCT: IBERICO PORK (ACORN FED FREE RANGE)	PACK
IB05	Iberico Pork Ribeye	2kgs
IB17	Iberico Secreto	1kg VP
IB100	Iberico Skin Off Pork Belly	1kg VP
IB21	Iberico Skin Off Pork Loin	1kg VP



**PORK (NON FREE-RANGE)**

CODE	PRODUCT	PACK
POH100	Spanish Pork Belly Skin On	1.3kg
POH12	Spanish Pork Spare Ribs – St Louis	2kg
RR122	Spanish Baby Back Ribs (10kg Box - minimum order)	10kg ctn
POH21	Spanish Pork Loin	2kg
POH05	Spanish Pork Scotch	2kg
POH111	Spanish Pork Shoulder Skin Off Bone Out	1.5kg
SP22	Spanish Pork Cheeks	1.6kg VP



### BACON & HAM NEW ZEALAND FREE FARMED

All Mahy Farms small goods are produced using free-farmed or free-range New Zealand pork.

CODE	BACON - FREE FARMED	PACK
BAPT14	Mahy Farms Free Farmed Streaky Bacon	1kg VP
BAPT15	Mahy Farms Free Farmed Loin Bacon	1kg VP
BAPT16	Mahy Farms Free Farmed Shoulder Bacon	1kg VP

CODE	HAMS - FREE FARMED	PACK
PT15	Mahy Farms Champagne Ham Whole	6-8kg
PT166	Mahy Farms Boneless Half Ham	2-2.5kg

### BACON – MADE FROM SPANISH PORK

CODE	NON FREE FARMED BACON	PACK
BAZ14	European Streaky Bacon - Double Pressed Cage Free	1kg
BAZ144	European Streaky Bacon - Double Pressed Cage Free Slab	6kg
BAZ145	European Streaky Bacon 5mm thick	

*\*This product is made with imported Spanish Pork and is not free range.*



### MAHY FARMS SMALL GOODS

These award winning small goods are produced by hand in small volumes, not mass produced. We use real free range meat, herbs and spices. If you need the list of ingredients, please ask us.



### SAUSAGES

CODE	SMALLGOODS	PACK
PT01	Black Pudding	300gm VP
PT09	Mahy Farms Chorizo Horseshoe	300gm VP
PT0999	Mahy Farms Chorizo Sausage	1kg VP (80gm each)
PTF16	Frankfurters	1kg VP
PT11	Kranksys (Small)	300gm VP
PT17	Pork Fennel Sage Sausage	1kg VP (80gm each)
PT13	Mahy Farms Jalapeno Sausage	1kg VP (70gm each)

CODE	HAM HOCKS - FREE FARMED	PACK
PT14	Mahy Farms Smoked Hocks	700-800gm
PT144	Mahy Farms Large Smoked Hock	2-2.5kg

All pork based small goods are produced using free farmed meat.





## BURGER PATTIES

CODE	PRODUCT	PACK
MPB01	Carve Beef Burger Patties 150gm	Min. 32# per box (frozen)
MPB02	Beef Burger Patties - Kids 100gm	Min. 32# per box (frozen)
MPB200	Carve Beef Burger Patties 200gm	Min. 32# per box (frozen)
MPL20	Hawkes Bay Lamb Patties 150gm	Min. 32# per box (frozen)
DC500	Pamu Venison Pattie 150gm	Min. 32# per box (frozen)

## MINCE & DICED PRODUCT

CODE	PRODUCT	PACK
BE550	Wagyu Mince	1kg VP
BE244	Wagyu Diced	1kg VP
BE50	Prime Beef Mince	2kg VP
BE24	Beef Diced	2kg VP
LD50	Lansdowne Beef Prime Mince	2kg VP
LA50	Lamb Mince A grade	2kg VP
LA24	Lamb Diced (Leg)	2kg VP
FF50	Pork Mince	2kg VP free range
FF24	Pork Diced (Freedom Farms)	2kg VP free range
VE50	Veal Mince	1kg VP
DC50	Venison Mince	2kg VP
DV50	Dutch Veal Mince	2kg VP

## OFFALS & OTHER BITS

CODE	PRODUCT	PACK
BE22	Beef Cheeks	2-3kg VP
BE122	Beef Marrow Bones Cut	per kg
BE26	Beef Tongue (raw)	800-900gms
PT26	Pickled Beef Tongue	800-950gms
FG23	Manu Goat Sweetbreads	
VE11	Veal Bones	20kg carton
WGR07	Whole Rabbit	700gm – 1kg



**DUNCAN NEW ZEALAND VENISON Exclusive to Carve Meat Co.**

This is a superb product from farmed New Zealand venison, grown in the Central Otago area and the Central Plateau of the North Island, producing fantastic tender product each time.

CODE	PRODUCT: VENISON	PACK
DC15	Duncan Cervena Bistro Fillet	1-2kg pack
DC08	Venison Short Shanks	2 per pack
DC22	Duncan Cervena Venison Cheek	



**NEW ZEALAND GRASS FED DAIRY GOAT**

CODE	PRODUCT: GOAT	PACK
FG06	Manu Goat Leg Tunnel Boned	
FG12	Manu Goat Shoulder Boneless	
FG122	Manu Goat Shoulder Bone In	



**FREE-RANGE CHICKEN** - Great chicken raised the true free range way. Animals that have access to pasture and clean water... no cages! *\*Product may be frozen.*

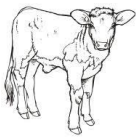
CODE	PRODUCT	PACK
WC05	Free Range Chicken Breasts Skin on	4 per pack – 1kg VP
WC13	Free Range Chicken Thighs-boneless (skin off)	10-12 per VP – 1kg
WC16	Free Range Chicken Thighs boneless(skin on)	10-12 per VP – 1kg
WC14	Free Range Chicken Drumettes	1kg VP
WC022	Free Range Chicken - Whole	1.4 kg
WC266	Mahy Farms deboned Whole Chicken	86gm (approx)
WC10	Free Range Chicken Livers	1kg



**DUCK**

This duck is barn raised in humane conditions. Great quality product.

CODE	PRODUCT	PACK
QD11	Duck Legs (price is per leg)	2 per pack - VP
QD02	Duck Breast (price is per breast)	2 per pack - VP



**VEAL**

VEAL PRODUCT (Bobby Veal)		PACK
VE10	Veal Schnitzel	1kg pack
VE27	Veal Primals, Topside, Rump, Knuckle	.500gm - 1.5kg

VEAL (Dutch)		PACK
DV01	Dutch Veal Tenderloin	1kg VP - 1pkt
DV06	Dutch Veal Striploin	2kg per VP
DV08	Dutch Veal Foreshanks & Hindshanks (Whole)	1 per VP - 2kg
DV09	Dutch Veal Osso Bucco Sliced	.800gm - 1kg VP (4 per pkt)
DV10	Dutch Veal Eye Round	1kg VP - 1pkt
DV14	Dutch Veal Liver	4-5kg VP - 1pkt
DV51	Dutch Veal Point End Brisket	2-3kg VP - 1pkt

**Some Veal product is subject to availability. Veal is a frozen product. Please contact us if you are interested in a particular cut/product. We are also sourcing New Zealand Rose Veal, please enquire if interested.**



**PLEASE NOTE:**

- All prices are exclusive of GST / All prices are subject to fluctuation/change.
- With all items we will try to inform you of cost increases and the reason why where possible.
- Payment terms are strictly 7 days from the invoice date.
- Allow 24 hours for delivery within the Auckland Area.
- For same day deliveries within the Auckland City area, orders are to be placed by 6am.
- Chilled overnight freight to most destinations in the North Island. Chilled freight to the South Island allow 2-4 days.
- Any product returns need to be notified within 36 hours. Product outside these time frames will not be accepted.
- **Minimum order of \$300 + GST.** Orders under this amount may incur a handling fee and freight charge.
- Terms and Conditions apply.

Our product range is continually changing. If you have any special requirements or queries please get in touch.

**Office**

0800 493 253 or (09) 441 7166

**Craig Luxton**

Business Owner

M 021 625 107

E [craig@carvemeatco.co.nz](mailto:craig@carvemeatco.co.nz)

**Jeremy Mahy**

Account Manager

M 021 947 588

E [jeremy@carvemeatco.co.nz](mailto:jeremy@carvemeatco.co.nz)

**Office**

E [info@carvemeatco.co.nz](mailto:info@carvemeatco.co.nz)

**Orders**

Email: [orders@carvemeatco.co.nz](mailto:orders@carvemeatco.co.nz) or phone the office number

