



## WHOLESALE PRODUCT LIST

December 2020



### **HAWKE'S BAY NATURAL, EXPORT LAMB (HALAL) - Exclusive to Carve Meat Co.**

Simply the best! Raised on lush green pastures of the Hawkes Bay to strict standards. Super tender, superb quality and consistency every time.

| CODE  | PRODUCT                              | PACK                |
|-------|--------------------------------------|---------------------|
| HB10  | Lamb Rump (cap off)                  | 6 per VP            |
| HB11  | Lamb Rump (cap on)                   | 4 per VP            |
| HB16  | Lamb 4 Rib Rack                      | 4 rib 2 per VP      |
| HB03  | Lamb Rack 30mm                       | 8 Rib Short Bone-VP |
| HB02  | Lamb Rack 75mm                       | 8 Rib Long Bone-VP  |
| HB04  | Lamb Loins (back straps)             | 4 per VP            |
| HB17  | Lamb Neck Fillet                     | 6 per VP            |
| HB06  | Tunnel Boned Lamb Leg                | 1 per VP            |
| HB12  | Lamb Shoulder Boned/rolled /netted   | 1 per VP            |
| HB122 | Lamb Shoulder, Flat Packed           | 1 per VP            |
| HB200 | Oyster (Banjo) Cut Shoulder, bone in | 1 per VP            |
| HB09  | Lamb Hind-shanks                     | 2 per VP 400gm+     |
| HB08  | Lamb Fore-shanks                     | 3 per VP 300gm+     |
| HB19  | Lamb Short Ribs                      | 4 per VP            |



### CARVE AGED PRIME STEER BEEF (HEREFORD/ANGUS)

Prime Steer, grass fed, cold boned and aged for tenderness.

| CODE  | PRODUCT                   | PACK                 |
|-------|---------------------------|----------------------|
| BE02  | Eye Fillet S/Muscle On    | 1.8kg+ VP            |
| BE02  | Eye Fillet S/Muscle Off   | 1.8kg+ VP            |
| BE05  | Scotch Fillet/Ribeye      | 3-4kg VP             |
| BE06  | Sirloin                   | 3-5kg VP             |
| BE07  | Rump                      | 4kg+ VP              |
| BE30  | Beef Skirt Steak          | 800gm -1kg VP        |
| BE51  | Point End Brisket         | 4kg+ VP              |
| BE08  | Short Rib                 | 1 set Per VP         |
| BE21  | Beef Bavette              | 1.5kg VP             |
| BE53  | Beef Chuck                | 4-5kg VP             |
| BE22  | Beef Cheeks               | 1-2kg VP             |
| BE23  | Beef Ox Tail              | 1kg VP               |
| BE11  | Beef Stock Bones          | 20kg carton          |
| BE12  | Beef Marrow Bones (Whole) | Whole                |
| BE122 | Beef Marrow Bones (Cut)   | Cut to required size |

*We do have other beef cuts available to us, however for some of these items we require a minimum order of 20kg. Please contact us if you need more information.*

| CODE  | PORTIONED CUT BEEF     | PACK |
|-------|------------------------|------|
| BE044 | Eye Fillet Portion Cut | VP   |
| BE055 | Scotch Portion Cut     | VP   |
| BE066 | Sirloin Portion Cut    | VP   |
| BE077 | Rump Portion Cut       | VP   |



### CARVE DRY AGED BEEF

We have a room purpose built for the dry ageing of meat, in particular beef. We dry age products between 7 to 28 days, giving the meat a rich color and providing a super tender eating experience. Please call to enquire.

| CODE | PRODUCT                | PACK  |
|------|------------------------|-------|
| DB02 | Dry Aged Beef Fillet   | Whole |
| DB05 | Dry Aged Scotch Fillet | Whole |
| DB06 | Dry Aged Sirloin       | Whole |
| DB07 | Dry Aged Beef Rump     | Whole |

*Note: We sell these meat cuts on the 'wet weight', not the finished weight.*



### CARVE WAGYU BEEF

| CODE   | PRODUCT                       | PACK  |
|--------|-------------------------------|-------|
| BEW51  | Wagyu Point End Brisket       | 4-5kg |
| BEW05  | Wagyu Scotch Fillet (MBS 3-4) |       |
| BEW21  | Wagyu Bavette                 |       |
| BEW16  | Wagyu Topside                 |       |
| BEW304 | Wagyu Thick Skirt             |       |

*\* Subject to availability, please enquire.*



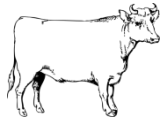
**LANSDOWNE BEEF – Beef with Provenance. Sourced from a single farm, formerly owned by our very own NZ decorated war hero Charles Upham.**

Angus X cattle farmed on the rolling pastures of the Conway Coast overlooking the South Pacific Ocean. Taste the difference. Lansdowne Beef cattle are raised in small herds, are grass fed using sustainable farming practices and are ethically raised. Please note that due to sourcing from a single farm, product is not always available.

**Exclusive to Carve Meat Co.**

| CODE  | PRODUCT                 |
|-------|-------------------------|
| LD02  | Eye Fillet S/Muscle Off |
| LD05  | Scotch Fillet           |
| LD06  | Sirloin                 |
| LD07  | Rump                    |
| LD08  | Short Rib               |
| LDF09 | Op Rib (6-7 Rib Whole)  |
| LD31  | Flat Iron Steak         |
| LD51  | Point End Brisket       |
| LD27  | Corned Silverside       |
| LD50  | Prime Beef Mince        |
| LD53  | Beef Chuck Diced        |

***Subject to availability. Please contact us to check product stock.***



**HANDPICKED** - Premium Beef which has been aged for 45-55 days. Sourced from high country stations in Central Otago and Southland, these animals roam free to graze on pasture all year-round. The beef is carefully selected with naturally high marbling providing confidence in the consistency, quality and taste of this excellent product. *Product may be subject to availability, please enquire.*

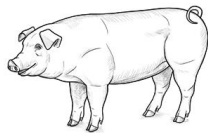
| CODE  | HANDPICKED                                   | WEIGHT RANGE PER PACK |
|-------|--|-----------------------|
| HP02  | Hand Picked Eye Fillet S/M Off               | 1.8-2.4 kg            |
| HP05  | Hand Picked Beef Scotch                      | 5kg +                 |
| HP06  | Hand Picked Sirloin                          | 5kg +                 |
| HP07  | Hand Picked Rump (whole)                     | 4-5 kg                |
| HP08  | Hand Picked Beef Shortrib                    | 2-2.5 kg              |
| HP088 | Hand Picked Beef Shortrib Cut (request spec) | 1-1.5 kg              |
| HP09  | Hand Picked Beef OP Rib (WHOLE)              | 6-7 kg                |
| HP51  | Hand Picked Point End Brisket                | 4 kg +                |

| CODE  | PORTIONED CUT BEEF                | PACK                  |
|-------|-----------------------------------|-----------------------|
| HP055 | Hand Picked Beef Scotch Portioned | Please request weight |
| HP066 | Hand Picked Sirloin Portioned     | Please request weight |
| HP077 | Hand Picked Rump Portioned        | Please request weight |



New Zealand grown Wagyu Beef, farmed using traditional methods in Canterbury. Please enquire on pricing and availability of higher marble score product. ***Product subject to availability.***

| CODE  | PRODUCT - MARBLE SCORE 6-7 | WEIGHT RANGE PER PACK |
|-------|----------------------------|-----------------------|
| WW05  | Ribeye (Scotch)            |                       |
| WW06  | Sirloin                    |                       |
| WW02  | Fillet                     |                       |
| WW21  | Bavette                    |                       |
| WW07  | D-Cut Rump                 |                       |
| WW088 | Shortrib Boneless          |                       |

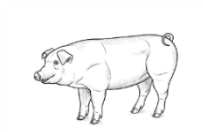


### FREEDOM FARMS PORK

The leaders in free farmed production, Freedom Farms were the first to bring us this fantastic, ethically raised pork. No cages, so great quality product made from happy pigs.

| CODE    | PRODUCT                             | WEIGHT RANGE PER PACK     |
|---------|-------------------------------------|---------------------------|
| FF100   | Belly Skin On/Bone Out              | 2.5-4.5kg VP              |
| FFSO100 | Belly Skin Off/Bone Out             | 2-4kg VP                  |
| FFBO10  | Belly Skin On Bone In               | 3-6kg VP                  |
| FF01    | Pork Fillets                        | 2.5kg gas flushed         |
| FF21    | Loin (Skin off)                     | 5kg gas flushed, 2.5kg VP |
| FFBB111 | Boston Butt – skin on bone in       | 4-5kg VP                  |
| FFSO111 | Pork Shoulder – Bone Out / Skin Off | 4-5kg VP                  |
| FFS111  | Pork Shoulder - Bone Out / Skin On  | 4-5kg VP                  |
| PT18    | Pickled Pork Shoulder               | 3-4kg VP                  |
| FF13    | Raw Hocks                           | Approx .750gm each        |
| FF05    | Pork Scotch/ Neck                   | 1.3-1.5kg VP              |
| FF22    | Pork Cheeks Skin Off                | 1-2kg VP                  |
| FF017   | Pork Backfat (2kg VP)               | 2kg VP                    |
| FF018   | Pork Skin (2kg VP)                  | 2kg VP                    |

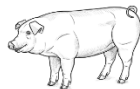
***\*All of the above products are free farmed, NO exception.***



**KUROBUTA PORK**

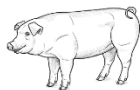
Snake River Farms Kurobuta pork is considered to be equal in status to “Kobe Beef”. We use only 100% purebred Berkshire Hogs as mandated by the Japanese Ministry of Agriculture.

| CODE | PRODUCT: PORK: SNAKE RIVER         | PACK                |
|------|------------------------------------|---------------------|
| KP05 | Kurobuta Pork Scotch (Collar Butt) | 2kg VP              |
| KP21 | Kurobuta Pork Loin                 | 1 - 1.5kg VP        |
| KP12 | Kurobuta Short Rib                 | 1kg VP (2 x .500gm) |



**SPANISH PORK**

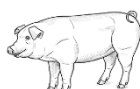
| CODE  | PRODUCT: IBERICO PORK (ACORN FED FREE RANGE)   | PACK   |
|-------|--|--------|
| IB05  | Iberico Pork Ribeye                            | 2kgs   |
| IB17  | Iberico Secreto ( <i>SPECIAL</i> )             | 1kg VP |
| IB100 | Iberico Skin Off Pork Belly ( <i>SPECIAL</i> ) | 1kg VP |
| IB21  | Iberico Skin Off Pork Loin ( <i>SPECIAL</i> )  | 1kg VP |



**PORK (NON FREE-RANGE)**

| CODE   | PRODUCT   | PACK         |
|--------|---|--------------|
| POH100 | Spanish Pork Belly Skin On                        | 1.3kg        |
| POH12  | Spanish Pork Spare Ribs – St Louis                | 2kg          |
| RR122  | Spanish Baby Back Ribs (10kg Box - minimum order) | 10kg ctn     |
| POH21  | Spanish Pork Loin                                 | 2kg          |
| POH05  | Spanish Pork Scotch                               | 2kg          |
| POH111 | Spanish Pork Shoulder Skin Off Bone Out           | 1.5kg        |
| SP22   | Spanish Pork Cheeks                               | 1.6kg VP     |
| PO15   | Pork Wings Cooked (Product of USA)                | 2kg + per VP |





### BACON & HAM NEW ZEALAND FREE FARMED

All Mahy Farms small goods are produced using free-farmed or free-range New Zealand pork.

| CODE   | BACON - FREE FARMED                   | PACK   |
|--------|---------------------------------------|--------|
| BAPT14 | Mahy Farms Free Farmed Streaky Bacon  | 1kg VP |
| BAPT15 | Mahy Farms Free Farmed Loin Bacon     | 1kg VP |
| BAPT16 | Mahy Farms Free Farmed Shoulder Bacon | 1kg VP |

| CODE  | HAMS - FREE FARMED             | PACK    |
|-------|--------------------------------|---------|
| PT15  | Mahy Farms Champagne Ham Whole | 6-8kg   |
| PT166 | Mahy Farms Boneless Half Ham   | 2-2.5kg |

### BACON – MADE FROM SPANISH PORK

| CODE   | NON FREE FARMED BACON                 | PACK              |
|--------|---------------------------------------|-------------------|
| BAZ14  | European Streaky Bacon - SLICED       | 1kg VP            |
| BAZ144 | European Streaky Bacon - SLAB (WHOLE) | 1-1.5kg per piece |
| BAZ145 | European Streaky Bacon 5mm thick      | 1kg VP            |

*\*This product is made with imported Spanish Pork and is not free range.*



### MAHY FARMS SMALL GOODS

These award winning small goods are produced by hand in small volumes, not mass produced. We use real free range meat, herbs and spices. If you need the list of ingredients, please ask us.



### SAUSAGES

| CODE   | SMALLGOODS                   | PACK               |
|--------|------------------------------|--------------------|
| PT01   | Black Pudding                | 300gm VP           |
| PT09   | Mahy Farms Chorizo Horseshoe | 300gm VP           |
| PT0999 | Mahy Farms Chorizo Sausage   | 1kg VP (80gm each) |
| PTF16  | Frankfurters                 | 1kg VP             |
| PT17   | Pork Fennel Sage Sausage     | 1kg VP (80gm each) |
| PT13   | Mahy Farms Jalapeno Sausage  | 1kg VP (70gm each) |

| CODE  | HAM HOCKS - FREE FARMED      | PACK      |
|-------|------------------------------|-----------|
| PT14  | Mahy Farms Smoked Hocks      | 700-800gm |
| PT144 | Mahy Farms Large Smoked Hock | 2-2.5kg   |

All pork based small goods are produced using free farmed meat.



## BURGER PATTIES

| CODE   | PRODUCT                                       | PACK                      |
|--------|---|---------------------------|
| MPB01  | Carve Beef Burger Patties - 150gm             | Min. 32# per box (frozen) |
| MPB02  | Carve Beef Burger Patties Kids - 100gm        | Min. 32# per box (frozen) |
| MPB200 | Carve Beef Burger Patties -200gm              | Min. 32# per box (frozen) |
| LDB01  | Lansdowne Beef Dry-Aged Burger Pattie – 150gm | Min. 32# per box (frozen) |
| MPL20  | Hawkes Bay Lamb Patties -150gm                | Min. 32# per box (frozen) |
| DC500  | Pamu Venison Pattie - 150gm                   | Min. 32# per box (frozen) |

## MINCE & DICED PRODUCT

| CODE  | PRODUCT                    | PACK              |
|-------|----------------------------|-------------------|
| BE550 | Wagyu Mince                | 1kg VP            |
| BE244 | Wagyu Diced                | 1kg VP            |
| BE50  | Prime Beef Mince           | 2kg VP            |
| BE533 | Beef Chuck Diced           | 2kg VP            |
| LD50  | Lansdowne Beef Prime Mince | 2kg VP            |
| LA50  | Lamb Mince A grade         | 2kg VP            |
| LA24  | Lamb Diced (Leg)           | 2kg VP            |
| FF50  | Pork Mince                 | 2kg VP free range |
| FF24  | Pork Diced (Freedom Farms) | 2kg VP free range |
| VE50  | Veal Mince                 | 1kg VP            |
| DC50  | Venison Mince              | 2kg VP            |
| WW50  | Waitaha Wagyu Mince        | 1kg VP            |

## OFFALS & OTHER BITS

| CODE | PRODUCT             | PACK        |
|------|---------------------|-------------|
| BE22 | Beef Cheeks         | 2-3kg VP    |
| BE26 | Beef Tongue (raw)   | 800-900gms  |
| BE27 | Corned Beef         | 1.5-3kg VP  |
| PT26 | Pickled Beef Tongue | 800-950gms  |
| VE11 | Veal Bones          | 20kg carton |



**DUNCAN NEW ZEALAND VENISON** Exclusive to Carve Meat Co.

This is a superb product from farmed New Zealand venison, grown in the Central Otago area and the Central Plateau of the North Island, producing fantastic tender product each time.

| CODE | PRODUCT: VENISON            | PACK            |
|------|-----------------------------|-----------------|
| DC15 | Pamu Bistro Fillet          | 1-2kg pack      |
| DC08 | Duncan Venison Short Shanks | 2 per pack      |
| DC28 | Duncan Venison Short Ribs   | 2-3 sets per VP |



**NEW ZEALAND GRASS FED DAIRY GOAT**

| CODE  | PRODUCT: GOAT               | PACK |
|-------|-----------------------------|------|
| FG12  | Manu Goat Shoulder Boneless |      |
| FG122 | Manu Goat Shoulder Bone In  |      |



**FREE-RANGE CHICKEN** - Great chicken raised the true free range way. Animals that have access to pasture and clean water... no cages! *\*Product may be frozen.*

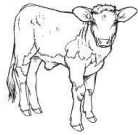
| CODE  | PRODUCT                                       | PACK                |
|-------|---|---------------------|
| WC05  | Free Range Chicken Breasts Skin on            | 4 per pack – 1kg VP |
| WC13  | Free Range Chicken Thighs-boneless (skin off) | 10-12 per VP – 1kg  |
| WC16  | Free Range Chicken Thighs boneless(skin on)   | 10-12 per VP – 1kg  |
| WC14  | Free Range Chicken Drumettes                  | 1kg VP              |
| WC022 | Free Range Chicken - Whole                    | 1.4 kg              |
| WC266 | Mahy Farms deboned Whole Chicken              | .800gm (approx)     |
| WC10  | Free Range Chicken Livers                     | 1kg                 |



**DUCK**

This duck is barn raised in humane conditions. Great quality product.

| CODE | PRODUCT     | PACK            |
|------|-------------|-----------------|
| QD11 | Duck Legs   | 2 per pack - VP |
| GL02 | Duck Breast | 2 per pack - VP |



**VEAL**

| VEAL PRODUCT (Bobby Veal) |                                      | PACK                       |
|---------------------------|--------------------------------------|----------------------------|
| VE10                      | Veal Schnitzel                       | 1kg pack                   |
| VE10                      | Veal Schnitzel <i>(SPECIAL)</i>      | <b>20kg carton minimum</b> |
| VE27                      | Veal Primals, Topside, Rump, Knuckle | .500gm - 1.5kg             |

| VEAL (Dutch) |   | PACK            |
|--------------|---|-----------------|
| DV01         | Dutch Veal Tenderloin <i>(SPECIAL)</i>                      | 1kg VP - 1pkt   |
| DV08         | Dutch Veal Foreshanks & Hindshanks (Whole) <i>(SPECIAL)</i> | 1 per VP - 2kg  |
| DV10         | Dutch Veal Eye Round <i>(SPECIAL)</i>                       | 1kg VP - 1pkt   |
| DV14         | Dutch Veal Liver <i>(SPECIAL)</i>                           | 4-5kg VP - 1pkt |
| DV51         | Dutch Veal Point End Brisket <i>(SPECIAL)</i>               | 2-3kg VP - 1pkt |

**Some Veal product is subject to availability. Veal is a frozen product. Please contact us if you are interested in a particular cut/product.**



**PLEASE NOTE:**

- All prices are exclusive of GST / All prices are subject to fluctuation/change.
- With all items we will try to inform you of cost increases and the reason why where possible.
- Payment terms are strictly 7 days from the invoice date.
- Allow 24 hours for delivery within the Auckland Area.
- For same day deliveries within the Auckland City area, orders are to be placed by 6am.
- Chilled overnight freight to most destinations in the North Island. Chilled freight to the South Island allow 2-4 days.
- Any product returns need to be notified within 36 hours. Product outside these time frames will not be accepted.
- **Minimum order of \$300 + GST.** Orders under this amount may incur a handling fee and freight charge.
- Terms and Conditions apply.

Our product range is continually changing. If you have any special requirements or queries please get in touch.

**Office**

0800 493 253 or (09) 441 7166

**Craig Luxton**

Business Owner

M 021 625 107

E [craig@carvemeatco.co.nz](mailto:craig@carvemeatco.co.nz)

**Jeremy Mahy**

Account Manager

M 021 947 588

E [jeremy@carvemeatco.co.nz](mailto:jeremy@carvemeatco.co.nz)

**Office**

E [info@carvemeatco.co.nz](mailto:info@carvemeatco.co.nz)

**Orders**

Email: [orders@carvemeatco.co.nz](mailto:orders@carvemeatco.co.nz) or phone the office number

